

PRO YEAR GERMANY



www.ifxsoccer.com

IFX 
INTERNATIONAL FUTBOL X-CHANGE

PLAY SOCCER ABROAD!

➤ IFX welcomes you to our organization and we are looking forward to working with you during IFX experience. Your journey abroad will be challenging, yet rewarding in many ways. In order to prepare you for your program, please read through the IFX Program guide to learn about our different processes and for tips on different things while living abroad.

This guide discusses all aspects of your upcoming program including important information about the program region, the school, club placement process, and more. Please read thoroughly through this program guide and should any further questions arise, please let us know.



NÜRNBERG

N ü r n b e r g is a city on the river Pegnitz and on the Rhine – Main – Danube Canal in the German state of Bavaria, in the administrative region of Middle Franconia, about 170 kilometres (north of Munich). It is the second-largest city in Bavaria (after Munich), and the largest in Franconia. The urban area also includes F ü r t h, Erlangen and Schwabach. As of 2016 the "European Metropolitan Area N ü r n b e r g" had approximately 3.5 million inhabitants.

N ü r n b e r g is often referred to as having been the 'unofficial capital' of the Holy Roman Empire, particularly because Imperial Diet (Reichstag) and courts met at N ü r n b e r g Castle. The Diets of N ü r n b e r g were an important part of the administrative structure of the empire. The increasing demand of the royal court and the increasing importance of the city attracted trade and commerce to N ü r n b e r g.

N ü r n b e r g was an early centre of humanism, science, printing, and mechanical invention. The city contributed much to the science of astronomy. In 1471 Johannes Mueller of K ö n i g s b e r g (Bavaria), built an astronomical observatory in N ü r n b e r g and published many important astronomical charts. In 1515, Albrecht D ü r e r, a native of N ü r n b e r g created woodcuts of the first maps of the stars of the northern and southern hemispheres, producing the first printed star charts, which had been ordered by Johannes Stabius. Around 1515 D ü r e r also published the "Stabiussche Weltkarte", the first perspective drawing of the terrestrial globe. Perhaps most famously, the main part of Nicolaus Copernicus's work was published in N ü r n b e r g in 1543.

The academy of fine arts situated in N ü r n b e r g is the oldest art academy in central Europe and looks back to a tradition of 350 years of artistic education. N ü r n b e r g is also famous for its Christkindlesmarkt (Christmas market), which draws well over a million shoppers each year. The market is famous for its handmade ornaments and delicacies.

People can visit the majestic Max-Morlock-Stadion which is the soccer stadium of Bundesliga club 1. FC N ü r n b e r g (known locally as "Der Club") and which accommodates 50,000 spectators. The club was founded in 1900 and plays in the 2. Bundesliga (2017 – 18 season).





LANGUAGE SCHOOL

For the Pro IFX programs, participants study in an intensive language program, studying the native language of the country. Normally the classes take place 3-4 times per week in the morning or afternoon, generally about 3-5 hours per day. The language institutes are private organizations, generally with small class sizes.

The language programs are offered in different levels and terms. A participant who has never studied the language before would start at the first level, and after the term, if successful in completing the course, would then move on to the next level for the next term.



Participation and attendance in the language school is an integral aspect of the IFX program and required. Learning a new language or improving in one already understood is a tremendous asset to have in one's future. It is also important to be able to communicate in the native language for daily life.





GERMAN UNIVERSITY PROGRAM



BUSINESS SCHOOL IN NÜRNBERG

Located in Nürnberg, Germany, the IFX partner Business School is a 110 year old private, business University. Noteworthy is the appearance of our partner University as a prominent member of the Chapter of Schools of Management from the French Conference of Graduate Schools (Grandes Ecoles), the European Foundation for Management Development (EFMD) and they are in preparation to obtain the Association to Advance Collegiate Schools of Business (AACSB). In 2007, the University became an EQUIS (European Quality Improvement System) accredited school, and joins top 1 % of business schools worldwide.

Approved by the Bavarian Ministry of Science and Education
Approved by the French Ministry of Science and Education
Several Student Programs

As a university of excellence, with close contacts to business and governmental circles, the school is one of the most prestigious universities in Europe and is recognized by the state as well as in the private sector.

Program Prerequisites:

The Bachelor' s degree programs require submission of the student' s high school diploma and transcripts to determine admittance. Admittance is subject to review by the University.

The Master' s degree requires a student to have completed already their Bachelor' s degree from a 4-year University.





CLUB TRIALS & EVALUATION PERIOD

During the first week after arrival, participants begin trials with IFX partner clubs to be evaluated by both the IFX staff as well as by the partner clubs. Training schedules for participants during the evaluation period can not be provided in advance but participants will be notified by the IFX representative generally the day prior or in the morning/early afternoon about their training for that evening. Participants may undergo several weeks of trials before a club ultimately decides to offer a spot on their team. In most cases, participants are placed within 2-4 weeks with a club. In some cases, it can be much quicker, or a bit longer, but the average is 2-4 weeks.

IFX places participants with clubs that are a good fit for their level. This means that we strive to place them with a club that will provide them with a challenging training and playing environment in order for them to improve all aspects of their game. On the other hand, participants are not placed with clubs where the participant is over their head and not have a realistic chance of getting playing time, or becoming a disruption to the partner club's training.

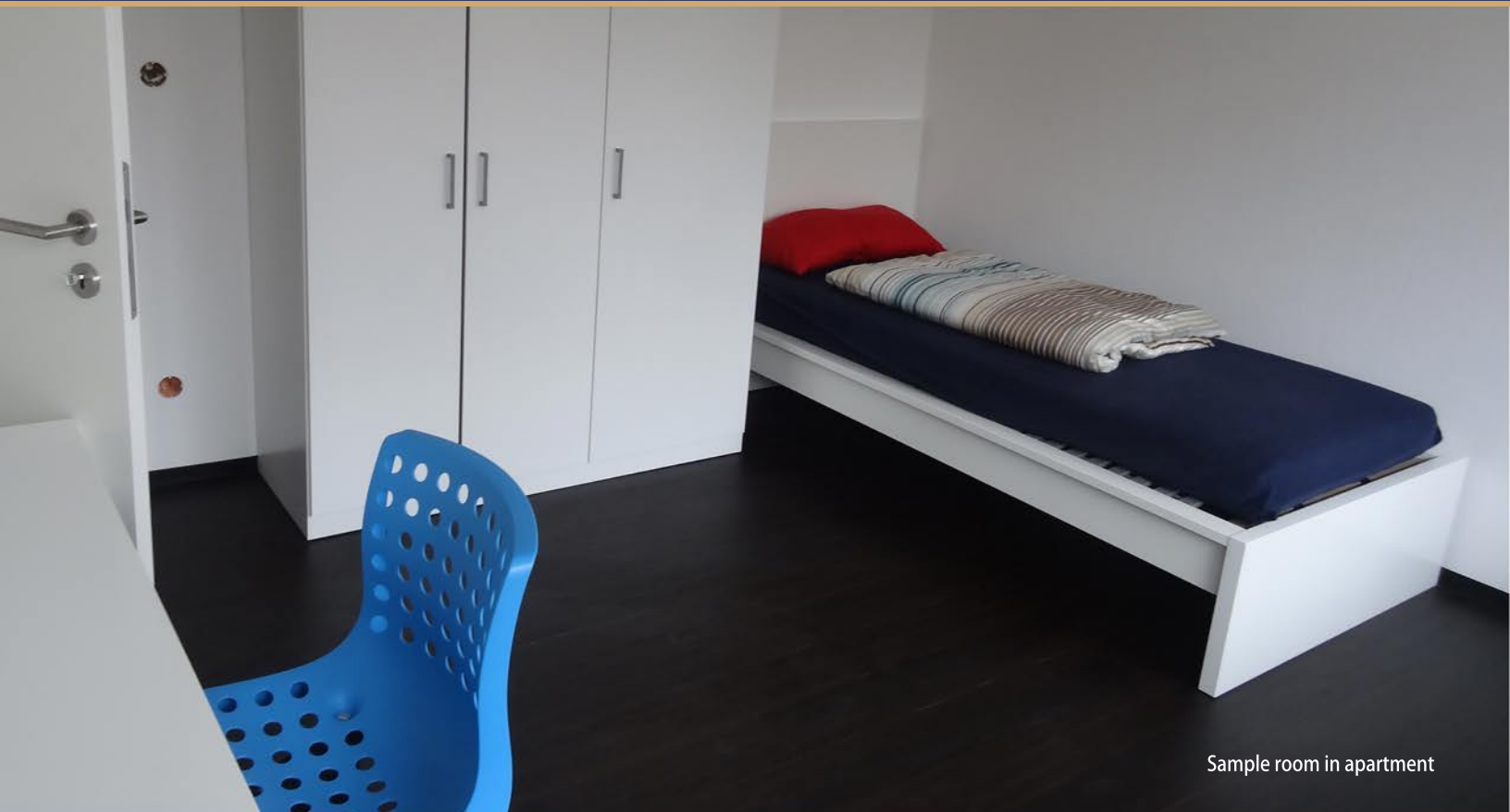


> PLAYER ACCOMMODATIONS



Upon arrival, participants are taken to their accommodations, which is in most cases a room in a shared apartment. In each apartment the inhabitants share a kitchen and a bathroom. There is no common living area or living room. Each participant will have his or her own furnished room. Furniture includes a single bed with linens, a desk with a chair, and a wardrobe for clothes. Build-in closets are almost non-existent in Europe. The rooms are generally between 9.5 and 15 sq. meters. IFX can not guarantee that all participants have the same sized or shaped rooms and places participants in rooms at our sole discretion. IFX generally places participants to live partially with other IFX participants as well as with other non-IFX roommates. Flats generally have between 3 – 10 rooms. It is also possible that the apartments are co-ed. Roommates of the IFX participants may be both short term and longer term tenants, of all ages and IFX has no control over either the IFX roommates nor the non-IFX roommates inhabiting the apartments, nor over their behavior.

Should there be any issues that arise with other roommates, be they IFX participants or non-IFX participants, the participant is responsible to contact immediately an IFX representative to discuss the issue at hand. Locations of IFX apartments are in urban neighborhoods that may exhibit characteristics and qualities of urban neighborhoods. While IFX' s apartments are in what are considered safe neighborhoods, IFX has no control over what occurs in these neighborhoods or elsewhere, and IFX participants inhabit the IFX apartments at their own risk.



Sample room in apartment

Bedroom example:
Not all IFX bedrooms
are the same size
or shape



Participants will go through a check-in procedure with the IFX representative upon move-in, noting anything that may already have minor damage (i.e. scratch on floor) so that they will have record of this for when they eventually move out. Should anything break and need repair, whether it was the fault of the participant or not, the participant is responsible to notify immediately the IFX representative so that the repairs can be made as quickly as possible. Anything damaged by the participant will be deducted from the deposit plus the cost of labor at 45.22 Euros per hour.

In that some IFX participants' rooms are not in apartments leased exclusively by IFX, IFX does not have complete control over the cleaning and reparation procedures of these apartments/rooms. IFX participants may sometimes arrive mid-month and into apartments where there are already other tenants living, and as such IFX can not guarantee the degree of cleanliness and state of repair of the communal rooms (kitchen and bathroom) of apartments, although IFX makes every effort to provide an apartment that has a reasonable degree of cleanliness and state of repair.

In an effort to provide participants with the best possible rooms available, if and when more attractive rooms (i.e. larger or more practical shape) become available, we may offer to the IFX participant the opportunity to move to another room.

Participants are responsible to clean their rooms and share in the cleaning of the communal rooms (kitchen & bathroom) on a regular basis. Participants must clean their bed linens monthly. Should participants be in violation of the apartment rules and/or not be living up to the cleaning expectations, they will be subject to possible expulsion from the program without refund. Damages made by the participant to anything in the room or apartment will be documented and deducted from their security deposit. A Move-Out document detailing any damages and items missing from the apartment plus any security deposit due back to the participant/family will be returned normally within 30 days of their program departure, but are subject to being withheld up to 6 months should there be significant damages to the apartment, in accordance with German law.

Deposits are held in a specific IFX Bank account allocated for all IFX security deposits. Additional policies and lease terms are explained in the IFX Occupancy Agreement, House Rules and Internet and Telephone Usage Policies documents which must be signed and is a condition of participation in the IFX program.

TRANSPORTATION



During the IFX participant's evaluation and trial period, IFX will drive participants to/from training. Once a participant is placed with a club, they will be responsible to get to and from training with public transportation. IFX will provide guidance to each participant on how to go about obtaining a monthly transportation train/bus pass that enables the participants to travel unlimited on public transportation throughout the region. The cost ranges generally from 50 – 75 Euros per month depending upon the region and country.

Participants are not permitted to drive vehicles while in the IFX program and will be subject to program dismissal should they be found driving a vehicle. Pro Year participants will be responsible to get to/from IFX Training (mornings) with public transportation from program onset.



> IFX CONTACT INFORMATION



IFX Main Office

4847 Hopyard Rd. , Ste. 4, #113
Pleasanton, CA 94588 - USA
Tel: +1 510 599 4625
email: info@ifxsoccer.com

Emergency Numbers:

Youth Year & Pro Year Spain IFX Programs:

Provided on your host family contact sheet

England and Spain Programs:

Provided on your host family contact sheet
or program documentation.

Pro IFX Germany:

Christian Schaller
Cell: +49 160 52 41 547
Office: +49 911 99 43 9401

In an emergency, call the police or appropriate authority:

GERMANY
Dial 112

SPAIN
Dial 112

ITALY
Dial 112

ENGLAND
Dial 999 or 112

